

# Expert in Repairing Skin



Skin Savior

"Reverse the Skin Crisis" with Scientific  
Research

Suitable for all skin types

Made in USA

# Beautify the Fragile and Sensitive Skin



Environmentally  
Friendly Materials.

Naturally  
Biodegradable.

## Savior



## Instant Repair Mask

Light and Luxurious, Care and Beautify the Skin

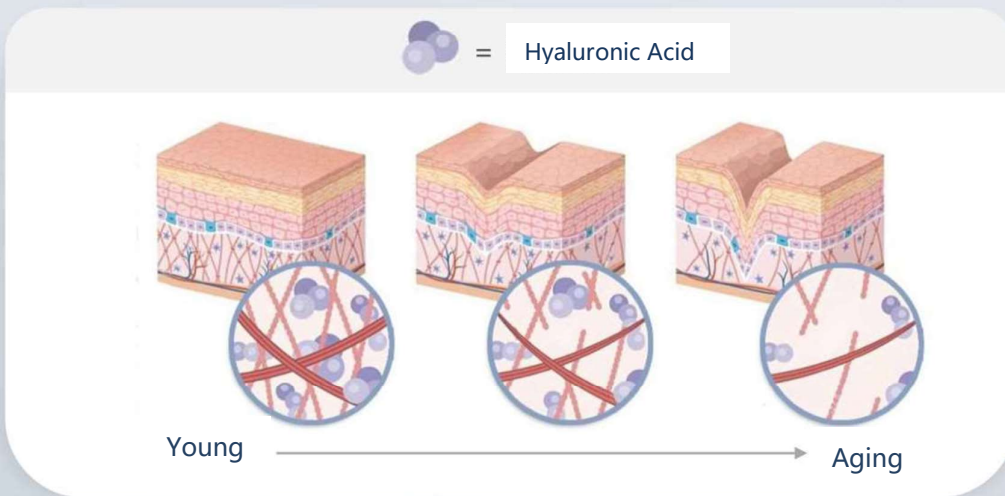
- It's like serum and a mask all in one, forming a breathable protective membrane on the skin.



## The Queen of Hydration

Hyaluronic Acid (HA) is one of the main matrix components of the skin epidermis and dermis

- HA can grab water and enter the cells, combining with keratin in the skin to form an egg-white gel, which sticks the cells together to keep the skin supple and full.
- Accelerate skin tissue recovery, improve wound healing and regeneration ability, and reduce scars.
- HA will be lost with age, and moderate supplementation can return to youthful skin.



## Unique Innovation

Smoothing, Moisturizing, Easy on Your Skin

- Physical cooling, soothing with icy feeling effect
- Thin, soft and easy on your skin
- Full, moisturizing and nourishing



- Revolutionize the fiber molecular structure of ordinary mask sheets, greatly improves the hydrophilicity of the mask sheet, perfectly integrates hyaluronic acid into the mask sheet fibers, perfectly integrates hyaluronic acid into the mask sheet fiber, grasp more than a thousand times its own weight of water, and continuously and deeply moisturize.



ISM ICY REPAIR MASK

## Superfine Fiber

- Using the ultra-fine weaving method to modify the mask sheet's fiber molecular to realize the mask sheet's ability to lock in water.
- Each fiber is thin, without uneven thickness and different shapes, which is common in ordinary fibers.
- ISM Icy Repair Mask Sheet is more compact and finer than other mask sheets, forming a water-locking layer to lock in the absorbed essence.

Left: ISM Icy Repair Mask Sheet



Right: Other Mask Sheet



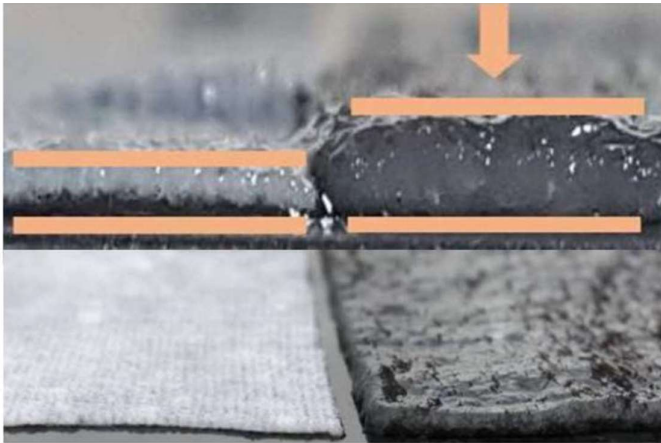
Mask Sheet under a microscope

## Enhanced Adsorption

Super water-locking function, the absorption capacity is increased by 30 times.

Left, Other Mask Sheet

Right ISM Icy Repair Mask Sheet



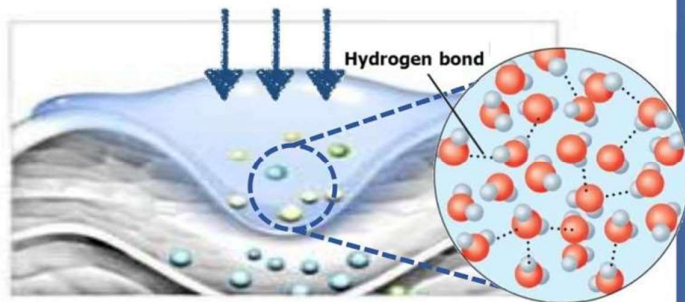
- Different from the water absorption mode of ordinary mask sheets, ISM Icy Repair Mask Sheet has a unique water retention effect. After absorbing the essence, it expands on its own, and the surface becomes gel-like, condensing moisture on the fiber surface, improving the dripping situation of other mask sheets.





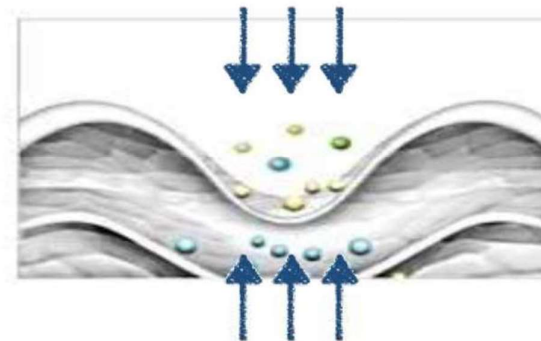
## Absorption Principle

### ISM Icy Repair Mask Sheet



- ✓ Hydrogen bond forces grasp moisture
- ✓ Fit the gaps in the skin
- ✓ Skin-friendly, does not pull the skin easily

### Other Mask Sheets



- ✗ The capillary phenomenon, moisture is absorbed quickly and dissipated quickly
- ✗ Skin gaps are not easy to fill
- ✗ Easy to overstretched the skin

## Mask Sheets Comparison

	Non-Fiber Mask	Thin Silk Mask	Bio Cellulose Mask	ISM Icy Repair Mask
Mask pores size	Too big	Normal	Extremely small	Extremely small
Absorption	Poor	Good	Excellent	Excellent
Extensibility	Poor	Poor	Excellent	Excellent
Humidity	Poor	Good	Excellent	Excellent
Skin friendly	Poor	Excellent	Excellent	Excellent
Price	Low	Medium	High	Medium
General Comments	Inexpensive, lack of breathability and moisture retention	Closely fits the skin texture, the essence carrying capacity is limited	Absorption, skin-friendly, protection, wet better, higher cost	Long-lasting moisture, easy to put on skin, fits well, does not pull the skin, and the price is reasonable

WIN



## The soul of the mask lies in the mask sheet

### The mask sheet adopts the original <ISM Icy Repair Mask Sheet>

Unique ultra-fine fiber molecular structure, hyaluronic acid is integrated into the mask sheet, like the second layer of skin that absorbs the essence, deeply moisturizes, and has a powerful water-locking ability to prevent water loss, moisturize and plump. The texture is soft, adheres to every inch of skin efficiently, and the mask does not dry out after lengthy treatment.

#### Original mask sheet enhances 3 major functions

**1. Improvement of water retention-Enhance the skin's ability to keep skin hydrated**

Ultra-fine weaving method, super water storage function, the mask will not dry after long-term treatment (ISM Icy Repair Mask Sheet, after 60 minutes, the water content is still as high as 92%; and the Ordinary cloth sheet is almost completely dry after 60 minutes exposure to air).

**2. Enhanced softness – the skin is softer, more elastic and brighter**

The fluff layer formed after absorbing the essence feels soft, is easy to put on, and has high transparency.

**3. Increased absorption capacity, - keep the skin's elastic fibers and collagen in a moisture-filled environment.**

After ISM Icy Repair Mask Sheet absorbs the essence, the surface becomes gel-like, and the essence is integrated into the mask sheet fiber. The fluff layer creates a vast total surface area, and the fluff layer can fully absorb and carry more serum.

#### ISM Icy Repair Mask Sheet



#### Other Mask Sheets



# ISM COMPLEX

ISM Icy Repair Mask

Instant Repair Mask

## Skin Repair 3 big steps

### 1. Block external stimuli (water-locking)

Hyaluronic acid forms a hydrogel film on the skin, bringing moisture to the skin while blocking external irritants

### 2. Relieve skin discomfort (soothing)

The compound plant soothing factor has a mild anti-irritant effect, which can alleviate the injuries caused by different stimuli harm and relieve skin discomfort.

### 3. Strengthen the skin barrier (repair)

Imperata cylindrica root extract, Antarctica extract, carboxymethyl  $\beta$ -glucan sodium triple repair, strengthen the skin barrier, maintain epidermal water content, promote collagen synthesis, improve autoimmunity, and restore skin to a healthy and perfect state.

Ingredients: compound plant soothing factor, base peptide, high-efficiency biochemical moisturizing factor, Imperata cylindrica root extract, antarctic moisturizing essence, hyaluronic acid.

## Instruction

Use once or twice a week, after cleansing, put the mask on the face for about 15-20 minutes. Remove the mask and use other skin care products directly without washing.

It is best to use ISM Complex Icy mask with other esthetic treatments.

