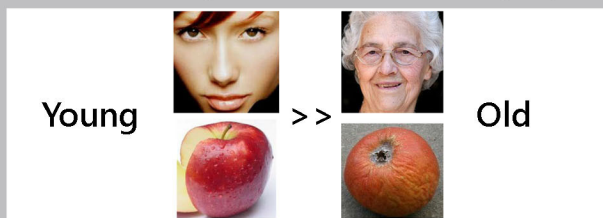


# ISM Ectura Skin Rejuvenating Essence

Use of longevity plant stem cells extract to delay skin aging: The rose and apple plant stem cells are known to contain ingredients that ensure the longevity of cells.



Plant stem cell extracts provide essential nutrients to human stem cells

Repairs Aging skin

No new epidermal stem cells can develop during a person's life.

It is more important to maintain the vitality of these valuable cells and their ability to divide as long as possible.

Every stem cell contains specific epigenetic factors whose task is to preserve the stem cells' multipotency and their ability to self-renew.

Plant stem cells have epigenetic factors similar to adult human stem cells. Applied in the right way, they positively impact the vitality of skin stem cells and their proper functioning.

Stem cells that have aged and weakened do not die, but they no longer form colonies.

One of the main ingredients in the ISM Ectura anti-aging formula is to use plant stem cells to increase the longevity and colony-forming efficiency – essentially, the vitality – of epidermal stem cells.

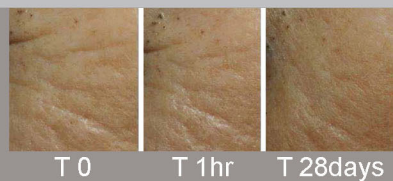
ISM Ectura has unique ingredients, Kangaroo flower contains natural fructose derivatives to strengthen skin structure especially long-lived plant stem cells. These longevity factors can slow skin aging, and it is an essential ingredient to protect skin stem cells. Hence, ISM Ectura Essence can keep the skin looking youthful longer and give it a better and more vital appearance. ISM Ectura promotes the vitality and longevity of skin stem cells, protects them from damage due to environmental stress, and thus delays the skin aging processes.

Under the influence of plant stem cell extract, the epidermal stem cells retain their vitality longer; and they can form new tissue and renew the skin. After continuously using the ISM Ectura skin rejuvenating essence for a few weeks, a significant, visible reduction in wrinkles can be seen.



## ISM Ectura Skin Rejuvenating Essence

**28** Reduce wrinkles in 28 days\*



ISM Ectura's complex formula contains extracts and stem cells of various miraculous plants.

\* Effects vary from person to person

Increase Tenascin-X production

28 Day

Stimulates collagen synthesis

27 Day

Enhance elastin synthesis

24 Day

Improve the structure of the dermis

Increases fibroblast contractility

20 Day

The main ingredients are kangaroo flowers containing natural fructose derivatives to strengthen the skin structure and an apple stem cell with a long shelf life. Plant stem cells provide essential nutrients for human stem cells and help epidermal stem cells maintain their stem cell properties. We utilize this unique "longevity" factor as one of the critical ingredients in ISM Ectura's Anti-Aging Formula. The stem cell elements in plant stem cells are very similar to those of human adult stem cells. When used properly, these plant stem cells can positively affect the vitality and specific functions of skin stem cells.

16 Day

12 Day

8 Day

4 Day

1 Day

Continue to use

**ISM Ectura Rejuvenating Essence**

Ladies with radiant and bright Skin

Men can stay young

### Main Ingredients:

Anigozanthos Flavidus Extract,  
Malus Domestica Fruit Cell Culture Extract,  
Rhododendron Ferrugineum Extract,  
Salvia Hispanica Seed Extract,  
Glycosyl Trehalose,  
Acetyl Tetrapeptide-11.

### HOW TO USE:

After cleansing in the morning and evening with **ISM Ectura** cleansing gel, apply an appropriate amount evenly on the entire face and neck and pat gently until the skin is completely absorbed.